

JAZZ ENSEMBLE AUDITION MUSIC

SCALE (CONCERT B \flat BLUES)

A ROCK $\text{♩} = 116-120$
G7



CHART EXCERPTS

B1 ROCK $\text{♩} = 128-134$



B2 SWING BALLAD $\text{♩} = 80-84$

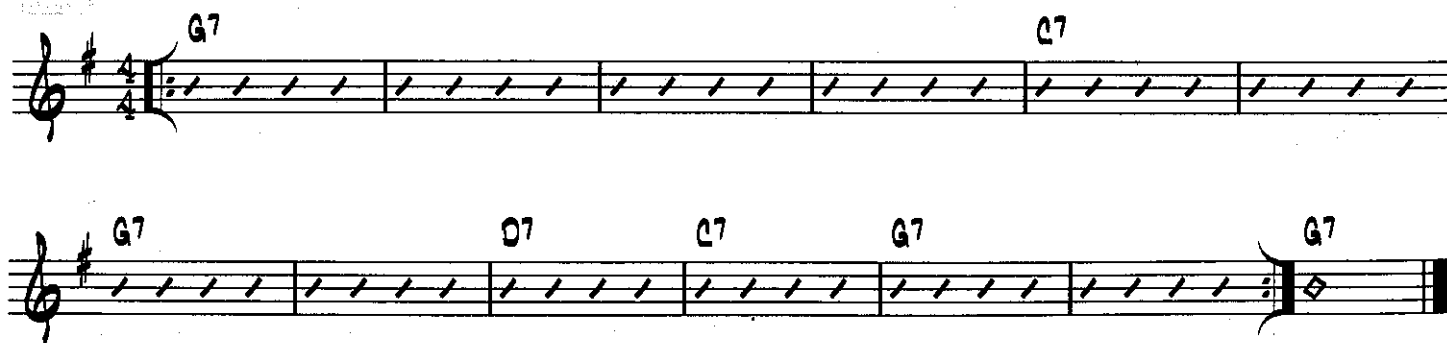


B3 SWING $\text{♩} = 160-172$



IMPROVISATION (optional)

C ROCK $\text{♩} = 116-120$



- ▶ For this excerpt, use track 9 of the RHYTHM STUDIES & IMPROVISATION STUDIES CD attached to the inside back cover of the *Standard of Excellence Jazz Ensemble Method Director Score*. Listen to the solo you hear the 1st time through. Improvise the 2nd, 3rd, and 4th times through using the solo you heard as a model. The notes of the blues scale at the top of this page (Excerpt **A**) are good pitches to use when improvising.

JAZZ ENSEMBLE AUDITION MUSIC

SCALE (CONCERT B \flat BLUES)

A ROCK $\text{♩} = 116-120$

Musical notation for the Scale (Concert B \flat Blues) in 4/4 time. The key signature has two flats (B \flat and E \flat). The melody starts on a C \flat 7 chord and features a blues scale pattern: C \flat 4, D \flat 4, E \flat 4, F4, G \flat 4, A \flat 4, B \flat 4, C \flat 5. The notation includes slurs and accents over the notes.

CHART EXCERPTS

B1 ROCK $\text{♩} = 128-134$

Musical notation for Chart Excerpt B1 in 4/4 time. The key signature has one sharp (F#). The melody starts on an m \sharp chord and features a blues scale pattern: m \sharp 4, n \sharp 4, o \sharp 4, p \sharp 4, q \sharp 4, r \sharp 4, s \sharp 4, m \sharp 5. The notation includes slurs and accents.

B2 BOSSA $\text{♩} = 116-120$

Musical notation for Chart Excerpt B2 in 4/4 time. The key signature has one sharp (F#). The melody starts on an F# chord and features a blues scale pattern: F#4, G#4, A#4, B4, C#4, D#4, E#4, F#5. The notation includes slurs and accents.

B3 UP SWING $\text{♩} = 172-200+$

Musical notation for Chart Excerpt B3 in 4/4 time. The key signature has two flats (B \flat and E \flat). The melody starts on an m \flat chord and features a blues scale pattern: m \flat 4, n \flat 4, o \flat 4, p \flat 4, q \flat 4, r \flat 4, s \flat 4, m \flat 5. The notation includes slurs and accents.

IMPROVISATION (optional)

C ROCK $\text{♩} = 116-120$

Musical notation for the Improvisation section in 4/4 time. The key signature has two flats (B \flat and E \flat). The notation consists of two staves of rhythmic patterns (diagonal lines) with chord changes indicated above: C \flat 7, F7, C \flat 7, G7, F7, C \flat 7, C \flat 7. The first staff has a C \flat 7 chord above the first measure and an F7 chord above the fifth measure. The second staff has C \flat 7 chords above the first, second, fourth, and fifth measures, and a G7 chord above the third measure.

► For this excerpt, use track 9 of the RHYTHM STUDIES & IMPROVISATION STUDIES CD attached to the inside back cover of the *Standard of Excellence Jazz Ensemble Method Director Score*. Listen to the solo you hear the 1st time through. Improvise the 2nd, 3rd, and 4th times through using the solo you heard as a model. The notes of the blues scale at the top of this page (Excerpt **A**) are good pitches to use when improvising.

SIGHTREADING

JAZZ ENSEMBLE AUDITION MUSIC

SCALE (CONCERT B \flat BLUES)

A ROCK $\text{♩} = 116-120$

G7



CHART EXCERPTS

B1 ROCK $\text{♩} = 128-134$



B2 SWING BALLAD $\text{♩} = 80-84$



B3 SWING $\text{♩} = 160-172$

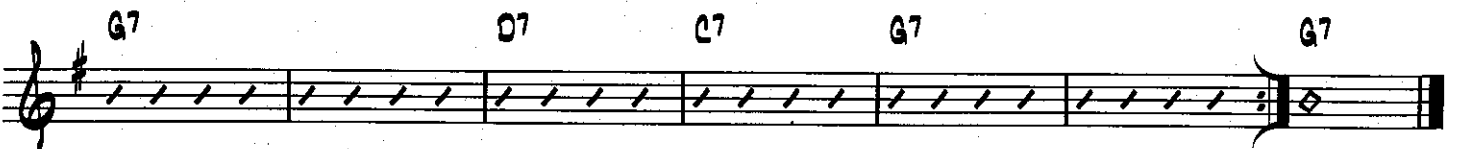
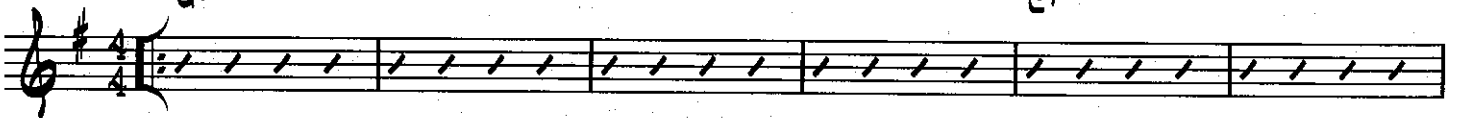


IMPROVISATION (optional)

C ROCK $\text{♩} = 116-120$

G7

C7



- For this excerpt, use track 9 of the RHYTHM STUDIES & IMPROVISATION STUDIES CD attached to the inside back cover of the *Standard of Excellence Jazz Ensemble Method Director Score*. Listen to the solo you hear the 1st time through. Improvise the 2nd, 3rd, and 4th times through using the solo you heard as a model. The notes of the blues scale at the top of this page (Excerpt **A**) are good pitches to use when improvising.

SIGHTREADING

JAZZ ENSEMBLE AUDITION MUSIC

SCALE (CONCERT B \flat BLUES)

A Rock $\text{♩} = 116-120$
C7



CHART EXCERPTS

B1 Rock $\text{♩} = 128-134$



B2 SWING BALLAD $\text{♩} = 104-108$



B3 SWING $\text{♩} = 120-126$



IMPROVISATION (optional)

C Rock $\text{♩} = 116-120$
C7



► For this excerpt, use track 9 of the RHYTHM STUDIES & IMPROVISATION STUDIES CD attached to the inside back cover of the *Standard of Excellence Jazz Ensemble Method Director Score*. Listen to the solo you hear the 1st time through. Improvise the 2nd, 3rd, and 4th times through using the solo you heard as a model. The notes of the blues scale at the top of this page (Excerpt **A**) are good pitches to use when improvising.

SIGHTREADING

JAZZ ENSEMBLE AUDITION MUSIC

SCALE (CONCERT B \flat BLUES)

A ROCK $\text{♩} = 116-120$
B \flat 7



CHART EXCERPTS

B1 ROCK $\text{♩} = 128-134$



B2 SWING BALLAD $\text{♩} = 80-84$

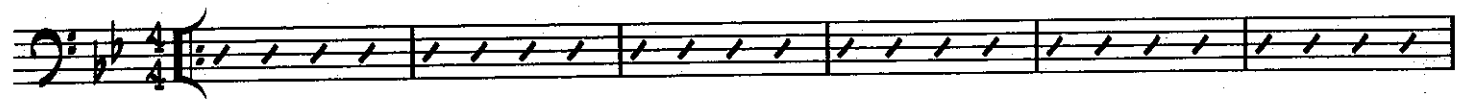


B3 SWING $\text{♩} = 160-172$



IMPROVISATION (optional)

C ROCK $\text{♩} = 116-120$
B \flat 7



- For this excerpt, use track 9 of the RHYTHM STUDIES & IMPROVISATION STUDIES CD attached to the inside back cover of the *Standard of Excellence Jazz Ensemble Method Director Score*. Listen to the solo you hear the 1st time through. Improvise the 2nd, 3rd, and 4th times through using the solo you heard as a model. The notes of the blues scale at the top of this page (Excerpt [A]) are good pitches to use when improvising.

SIGHTREADING

JAZZ ENSEMBLE AUDITION MUSIC

SCALE (CONCERT B \flat BLUES)

A Rock $\text{♩} = 116-120$
 $B^{\flat}7$

CHART EXCERPTS

B1 Rock $\text{♩} = 128-134$

B2 JAZZ WALTZ $\text{♩} = 144-152$

B3 SWING $\text{♩} = 120-126$

IMPROVISATION (optional)

C Rock $\text{♩} = 116-120$
 $B^{\flat}7$

► For this excerpt, use track 9 of the RHYTHM STUDIES & IMPROVISATION STUDIES CD attached to the inside back cover of the *Standard of Excellence Jazz Ensemble Method Director Score*. Listen to the solo you hear the 1st time through. Improvise the 2nd, 3rd, and 4th times through using the solo you heard as a model. The notes of the blues scale at the top of this page (Excerpt A) are good pitches to use when improvising.

SIGHTREADING

PIANO

JAZZ ENSEMBLE AUDITION MUSIC

SCALE (CONCERT B \flat BLUES)

A Rock $\text{♩} = 116-120$

$B^{\flat}7$

CHART EXCERPTS

B1 Rock $\text{♩} = 120-126$

C_{M7} B^{\flat} C_{M7} C_{M7} B^{\flat}/O E^{\flat} B^{\flat}/O E^{\flat}

B^{\flat}/O A^{\flat}/C B^{\flat}/O E^{\flat} B^{\flat}/O E^{\flat} $D_{M7}(b9)$ $G7$

B2 JAZZ WALTZ $\text{♩} = 144-152$

B♭ SWING $\text{♩} = 120-126$

IMPROVISATION (optional)

C ROCK $\text{♩} = 116-120$

► For this excerpt, use track 9 of the RHYTHM STUDIES & IMPROVISATION STUDIES CD attached to the inside back cover of the *Standard of Excellence Jazz Ensemble Method* Director Score. Listen to the solo you hear the 1st time through. Improvise the 2nd, 3rd, and 4th times through using the solo you heard as a model. The notes of the blues scale at the top of this page (Excerpt **A**) are good pitches to use when improvising.

SIGHTREADING

JAZZ ENSEMBLE AUDITION MUSIC

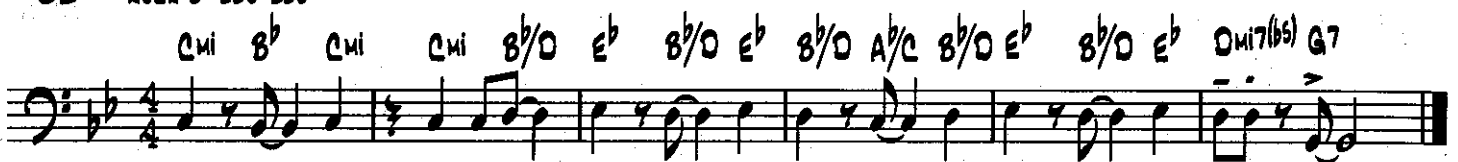
SCALE (CONCERT B \flat BLUES)

A ROCK $\text{♩} = 116-120$
B \flat 7

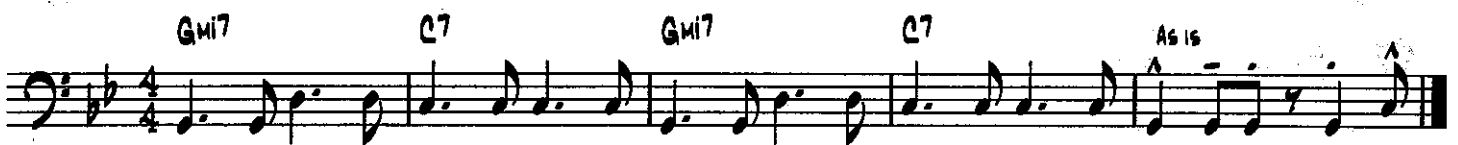


CHART EXCERPTS

B1 ROCK $\text{♩} = 120-126$



B2 BOSSA $\text{♩} = 116-120$

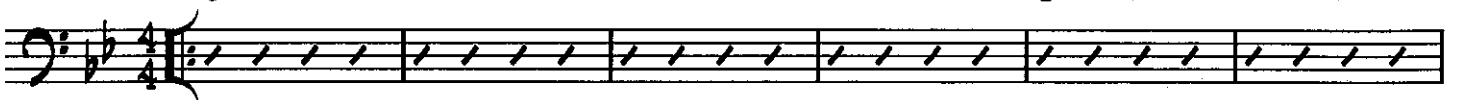


B3 SWING $\text{♩} = 120-126$



IMPROVISATION (optional)

C ROCK $\text{♩} = 116-120$
B \flat 7



► For this excerpt, use track 9 of the RHYTHM STUDIES & IMPROVISATION STUDIES CD attached to the inside back cover of the *Standard of Excellence Jazz Ensemble Method Director Score*. Listen to the solo you hear the 1st time through. Improvise the 2nd, 3rd, and 4th times through using the solo you heard as a model. The notes of the blues scale at the top of this page (Excerpt **A**) are good pitches to use when improvising.

JAZZ ENSEMBLE AUDITION MUSIC

RHYTHM

A ROCK $\text{♩} = 128-134$
SNARE

CHART EXCERPTS

B1 ROCK $\text{♩} = 128-134$
CLOSED H.H.

B2 SWING $\text{♩} = 120-126$
R. CYM.

B3 BOSSA $\text{♩} = 116-120$
CLOSED H.H.

IMPROVISATION (optional)

C ROCK $\text{♩} = 116-120$

▶ For this excerpt, use track 9 of the RHYTHM STUDIES & IMPROVISATION STUDIES CD attached to the inside back cover of the *Standard of Excellence Jazz Ensemble Method Director Score*. Listen to the solo you hear the 1st time through. Improvise the 2nd, 3rd, and 4th times through using the solo you heard as a model.

SIGHTREADING

JAZZ ENSEMBLE AUDITION MUSIC

SCALE (CONCERT B \flat BLUES)

A ROCK $\text{♩} = 116-120$



CHART EXCERPTS

B1 ROCK $\text{♩} = 128-134$



B2 SWING BALLAD $\text{♩} = 120-126$

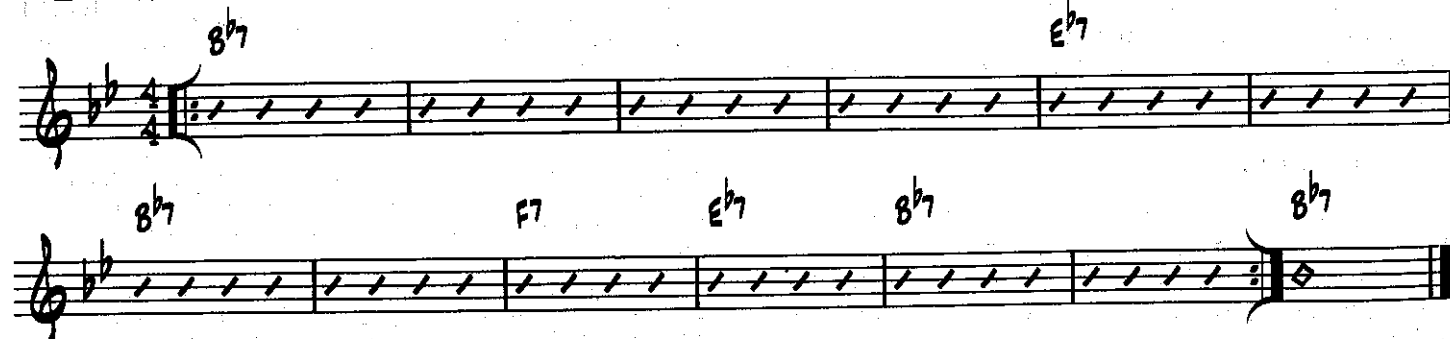


B3 BOSSA $\text{♩} = 116-120$



IMPROVISATION (optional)

C ROCK $\text{♩} = 116-120$



- For this excerpt, use track 9 of the RHYTHM STUDIES & IMPROVISATION STUDIES CD attached to the inside back cover of the *Standard of Excellence Jazz Ensemble Method Director Score*. Listen to the solo you hear the 1st time through. Improvise the 2nd, 3rd, and 4th times through using the solo you heard as a model. The notes of the blues scale at the top of this page (Excerpt **A**) are good pitches to use when improvising.

SIGHTREADING